



LUXOR LIVE



**LUXOR LIVE - BASEMENT**

**VENUE & TECHNICAL INFORMATION**

# INDEX

GENERAL .....	2	PA & Monitoring .....	5
Venue .....	2	PA.....	5
Info.....	2	Monitoring .....	5
Contact.....	2	Microphones, DI's & Stands.....	5
Bookings.....	2	Microphones.....	5
Production.....	2	House RF Frequencies.....	5
Technical .....	2	Stands.....	5
Parking.....	3	LIGHTS .....	6
Hospitality .....	3	Console.....	6
Dressing rooms.....	3	Console.....	6
Miscellaneous.....	3	Programs.....	6
DJ Gear .....	3	Fixtures .....	6
Infra & Connections.....	3	Hall.....	6
Special FX .....	3	Patch .....	6
Stage .....	4	APPENDICES .....	7
DJ Booth.....	4	Directions.....	7
Hall Dimensions.....	4	Rules & Regulations .....	8
AUDIO .....	5	Sound limitations.....	8
Consoles, Interfaces & Outboard .....	5	Safety.....	8
Consoles.....	5	Decoration flammability.....	8
Outboard .....	5	Environmental protection zone.....	8

FOR MORE INFORMATION & OTHER HALLS SEE: [WWW.LUXORLIVE.NL/TECH-SPECS](http://WWW.LUXORLIVE.NL/TECH-SPECS)

## GENERAL

### VENUE

#### INFO

##### NAME

LUXOR LIVE –  
BASEMENT

##### CAPACITY

50 – STANDING

##### VISITOR ADDRESS

WILLEMSPLEIN 10  
6811 KB ARNHEM  
THE NETHERLANDS

##### LOAD IN ADDRESS

WILLEMSPLEIN 10  
6811 KB ARNHEM  
THE NETHERLANDS

#### CONTACT

##### POSTAL ADDRESS

LUXOR LIVE  
P.O. Box 925  
6800 AX ARNHEM

##### PHONE

+31-(0)26-3511660

##### EMAIL

[INFO@LUXORLIVE.NL](mailto:INFO@LUXORLIVE.NL)

##### WEBSITE

[WWW.LUXORLIVE.NL](http://WWW.LUXORLIVE.NL)

#### BOOKINGS

##### DANCE

NIELS LEFERINK  
[NIELS@LUXORLIVE.NL](mailto:NIELS@LUXORLIVE.NL)

JELLE SCHONEVELD  
[JELLE@LUXORLIVE.NL](mailto:JELLE@LUXORLIVE.NL)

##### PRODUCTION

JESSICA VAN VORSTENBOS  
[JESSICA@LUXORLIVE.NL](mailto:JESSICA@LUXORLIVE.NL)

IZANKA LABOTS  
[IZANKA@LUXORLIVE.NL](mailto:IZANKA@LUXORLIVE.NL)

#### TECHNICAL

##### SOUND

MATTIJS DE VROOMEN  
[MATTIJS@LUXORLIVE.NL](mailto:MATTIJS@LUXORLIVE.NL)

##### LIGHT

KOEN WOLTERINK  
[KOEN@LUXORLIVE.NL](mailto:KOEN@LUXORLIVE.NL)

FON SANDERS  
[FON@LUXORLIVE.NL](mailto:FON@LUXORLIVE.NL)

## PARKING

ALL PARKING FACILITIES ARE SHARED WITH THE MAIN AND SMALL HALL.

### AVAILABLE SPACE

≈ SIX CARS (15 × 4 METERS)

### PARKING POWER

- 1 × 400V/32A 3 PHASE (CEE FORM)
- 1 × 230V/16A 1 PHASE (SCHUKO OR CEE FORM)

### LOCATION

ARTIST-PARKING IS NEXT TO THE LUXOR LIVE OFFICE AND BACKSTAGE ENTRANCE AT THE BACK OF THE BUILDING.

## HOSPITALITY

### DRESSING ROOMS

DRESSING ROOMS ARE SHARED WITH THE MAIN HALL AND MIGHT NOT BE AVAILABLE FOR THE BASEMENT. IF A DRESSING ROOM IS PROVIDED YOU'RE WELCOME TO USE THE DRESSING ROOMS FOR ONE HOUR AFTER THE SHOW UNLESS AGREED UPON OTHERWISE.

#### LARGE DRESSING ROOM

- |            |                  |
|------------|------------------|
| 1 × SHOWER | 1 × REFRIGERATOR |
| ✓ TOWELS   | 2 × MIRROR       |
| 1 × TOILET | ✓ FURNITURE      |
| 1 × SINK   | ✓ LOCKABLE       |

#### SMALL DRESSING ROOM

- |                  |             |
|------------------|-------------|
| 1 × SINK         | ✓ FURNITURE |
| 1 × REFRIGERATOR | ✓ LOCKABLE  |
| 1 × MIRROR       |             |

#### GENERAL (SHARED)

- |                     |                          |
|---------------------|--------------------------|
| 1 × SHOWER          | 1 × WASHING DRYER        |
| ✓ TOWELS            | 1 × IRONING IRON & BOARD |
| 2 × TOILET          | ✓ WIFI                   |
| 1 × WASHING MACHINE |                          |

## MISCELLANEOUS

### DJ GEAR

PROVIDED ON REQUEST

### MIXERS

- 1 × PIONEER DJM-900NXS

### MEDIA PLAYERS

- 4 × PIONEER CDJ-2000NXS

### TURNTABLES

- 2 × TECHNICS SL 1210 MK2  
ORTOFON CONCORDE MKII MIX  
CARTRIDGE & STYLUS

TURNTABLES ARE SHARED WITH OTHER HALLS AND MIGHT NOT BE AVAILABLE

## INFRA & CONNECTIONS

### DATA

- 1 × CAT5E – RJ45  
↳ INTERNET CONNECTION
- 1 × CAT5E – LIGHTING CONTROL  
↳ TO CONTROL PANEL AT BAR

### POWER

- ✓ × 230V KERAF PLUGBOARDS  
↳ ALL BLACK
- 1 × 400V/32A 3 PHASE – CEE FORM  
↳ USED FOR FOH, PA AND DJ-SET

### SPECIAL FX

DUE TO THE SMALL SIZE AND CLEARANCE OF THIS HALL, SPECIAL FX ARE NOT POSSIBLE. THIS INCLUDES (BUT IS NOT LIMITED TO):

FLAME OR SPARK-JETS, (LOW-, VERTICAL-) FOG OR HAZE, CO<sup>2</sup>, LASERS, BUBBLE MACHINES, CONFETTI-OR STREAMER-SHOTS AND STROBOSCOPES.

# STAGE

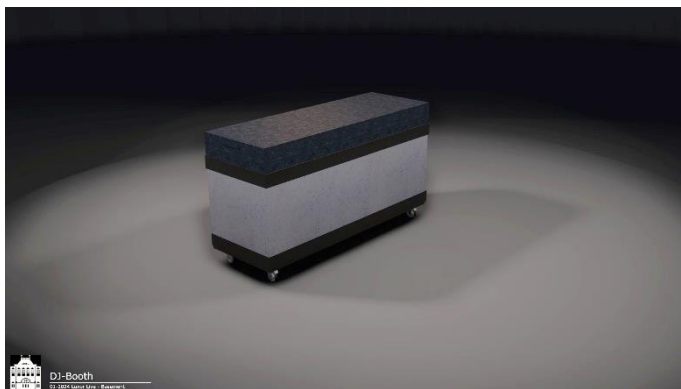
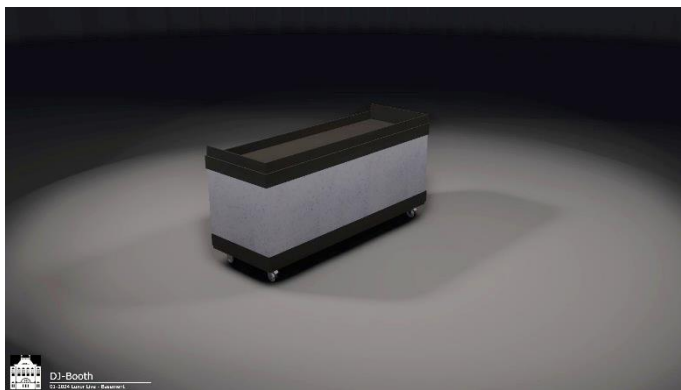
## DJ BOOTH

CUSTOM DESIGN WHITE GoGo-PLASTIC – ROLLING DJ-BOOTH WITH OPTIONAL ALUMINUM HOOD

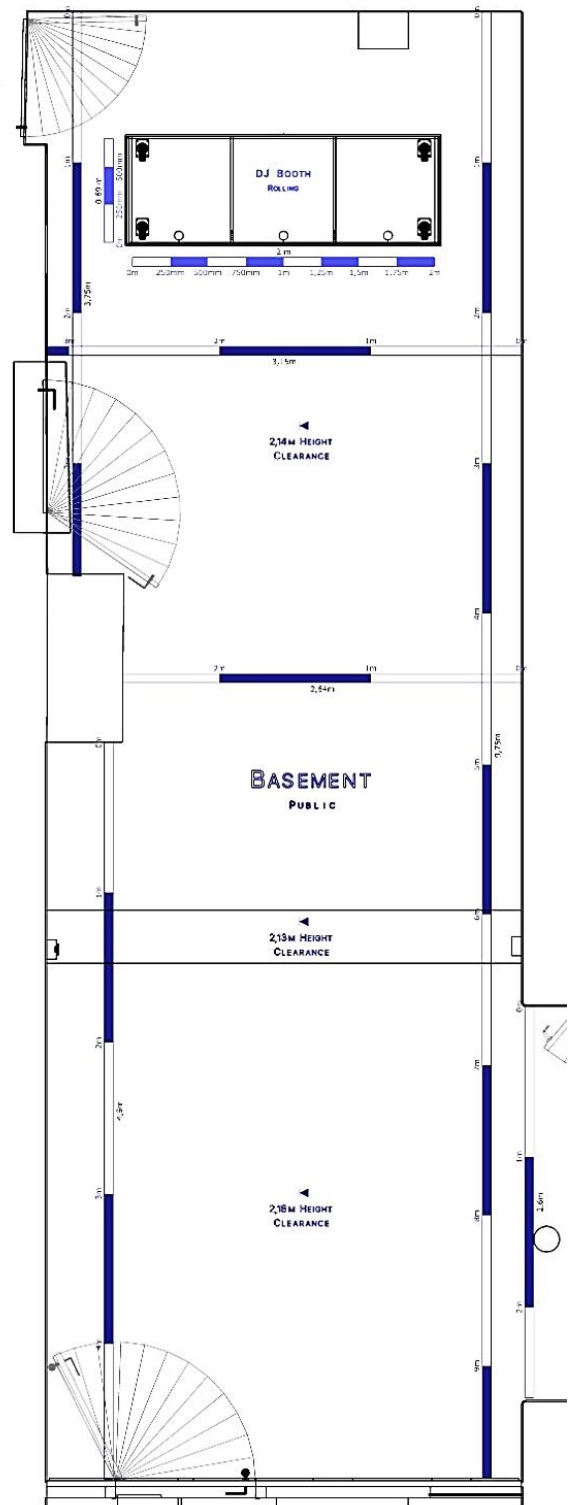
THE DJ-BOOTH CAN MOVE AROUND THE ROOM BUT WILL NOT BE REMOVED FROM THE AREA. WHEN NOT IN USE IT CAN BE COVERED WITH THE HOOD, ON WHICH LIGHTWEIGHT ITEMS MAY BE PLACED.

### MEASUREMENTS

- WIDTH: 2 M
- DEPTH: 0,69 M
- HEIGHT: 0,9 M
- HEIGHT: 1,15 M (WITH HOOD)



## HALL DIMENSIONS



FULL SIZE PDF VERSION AVAILABLE AT:  
[WWW.LUXORLIVE.NL/TECH-SPECS](http://WWW.LUXORLIVE.NL/TECH-SPECS)

# AUDIO

## CONSOLES, INTERFACES & OUTBOARD

### CONSOLES

#### ANALOG

1 × MIDAS VENICE 240  
24 IN/12 OUT

### OUTBOARD

#### FX RACK

1 × KLARK TEKNIK 160A 2CH GEO

## PA & MONITORING

### PA

2 × ELECTRO-VOICE Sx A250 ACTIVE TOP  
1 × ELECTRO-VOICE PLASMA P2 ACTIVE SUB

### MONITORING

1 × ELECTRO-VOICE PLASMA P1 ACTIVE WEDGE

### HOUSE RF FREQUENCIES

FREQUENCIES IN USE BY OUR EQUIPMENT:

MAIN HALL ULXD 1: 624,875 MHz  
MAIN HALL ULXD 2: 616,150 MHz  
MAIN HALL ULXD 3: 619,575 MHz  
MAIN HALL ULXD 4: 610,700 MHz

SMALL HALL ULXD 1: 606,700 MHz  
SMALL HALL ULXD 2: 612,600 MHz

## MICROPHONES, DI'S & STANDS

### MICROPHONES

#### WIRED:

1 × SHURE SM 58

### STANDS

☞ ALL BLACK

2 × K&M SPEAKER STAND  
✓ × K&M MICROPHONE STANDS  
☞ ON REQUEST ONLY

### SOUND LIMITATIONS

103 dB(A) - LEQ 15 MIN



FOR MORE INFORMATION SEE: 'RULES & REGULATIONS – SOUND LIMITATIONS' ON PAGE 8

# LIGHTS

ALL LIGHTING HAS FIXED POSITIONS & PROGRAMMING. OPERATION IS DONE BY BAR PERSONNEL THROUGH A FIXED SET OF LOOKS AND FX. IT'S POSSIBLE TO BRING YOUR OWN LIGHTING CONSOLE BUT THERE IS NO FOH POSITION WITH OVERVIEW.



## CONSOLE

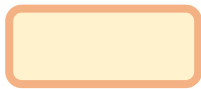
### CONSOLE

- 1 × VISUAL PRODUCTIONS CUECORE2
  - 1 × VISUAL PRODUCTIONS B-STATION2
- 🔗 CONTROLLED BY BAR PERSONNEL

### PROGRAMS

PRE-PROGRAMMED BUTTONS:

1: NEUTRAL  
WORKLIGHT



OVERRULES ALL  
OTHER CUES

2: BRIGHTNESS  
CONTROL



MASTER BRIGHTNESS  
CONTROL

5: WHITE STROBE  
EFFECT



FAST SPARKLE,  
OVERRULES ALL  
OTHER CUES

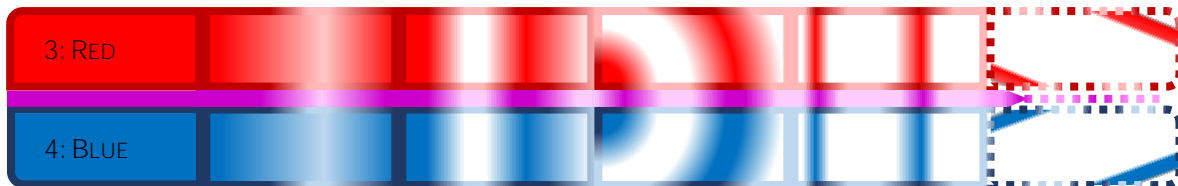
6: WHITE PULSE  
EFFECT



FAST PULSE EFFECT,  
OVERLAYS ON OTHER  
ACTIVE CUES

3 - 4: COLORED LOOKS

A: SOLID COLOR    B: LIGHT WAVE    C: MEDIUM WAVE    D: MEDIUM PULSE    E: ACTIVE PULSE    F: FAST BARS



A RED AND BLUE COLOR STACK, EACH WITH 6 CUES THAT INCREASE IN INTENSITY. STACKS CAN BE OVERLAYED ON EACH OTHER TO CREATE MAGENTA (EFFECTS). OTHER COLORS ARE NOT AVAILABLE.

## FIXTURES

### HALL

#### LED

- 4 × SHOWTEC OCTOSTRIP MKII SET  
(7 strips per set - 28 in total)
- 192CH MODE

## PATCH

### PROTOCOLS

ART-NET RJ45/WiFi  
DMX 5P XLR

### UNIVERSES:

- 1 SET A & B
- 2 SET C & D

FULL PLOTS AND PATCH REPORTS AVAILABLE AT: [WWW.LUXORLIVE.NL/TECH-SPECS/LIGHTS](http://WWW.LUXORLIVE.NL/TECH-SPECS/LIGHTS)

# APPENDICES

## DIRECTIONS

### NAVIGATION ADDRESS:

WILLEMSPLEIN 10, 6811KB, ARNHEM, NETHERLANDS.

### MAP LINKS:

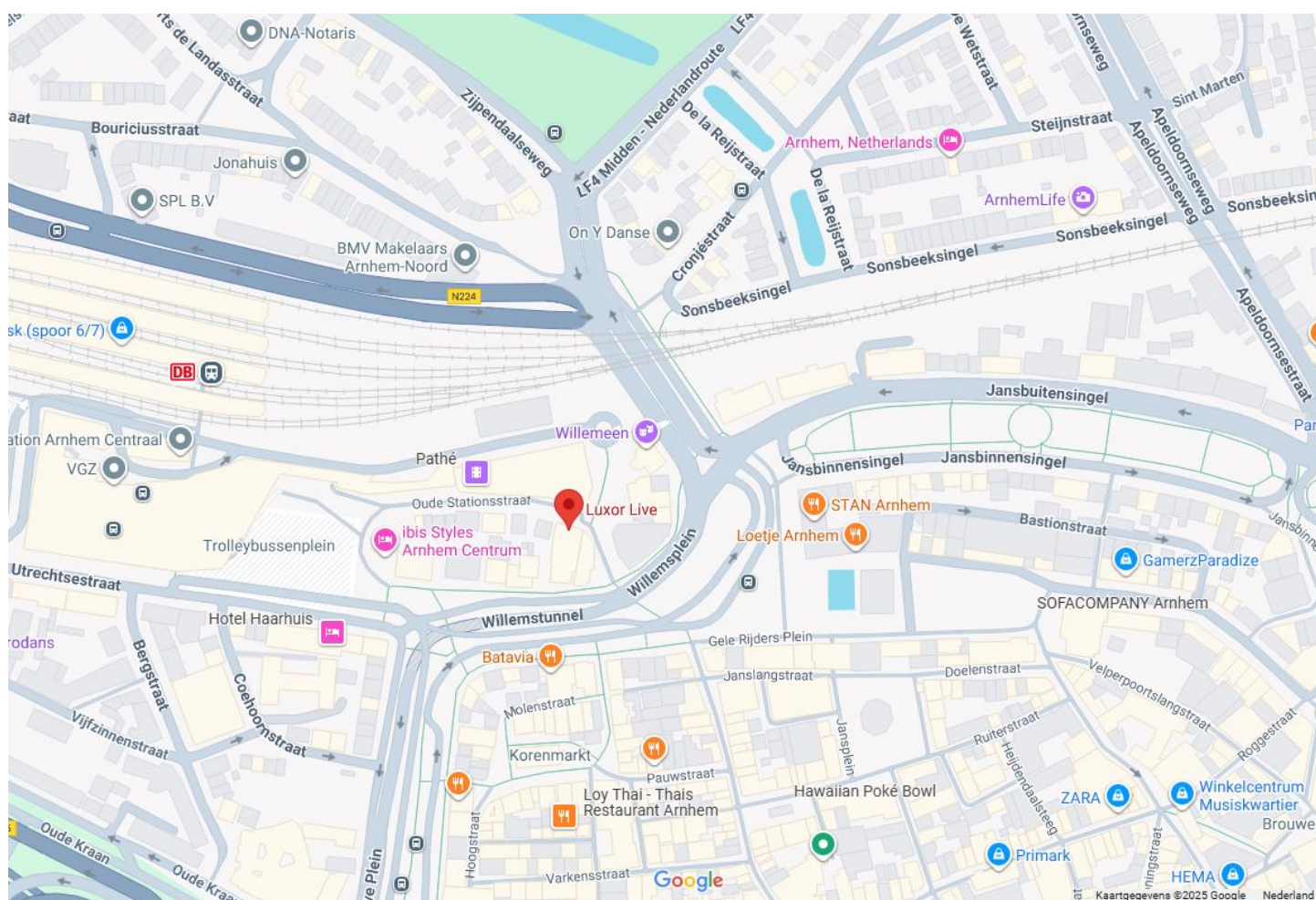
GOOGLE MAPS: [HTTPS://MAPS.APP.GOO.GL/ATPk3FTFAERDPKG76](https://maps.app.goo.gl/ATPk3FTFAERDPKG76)

APPLE MAPS: [HTTP://MAPS.APPLE.COM/?DADDR=WILLEMSPLEIN%2010%20ARNHEM](http://maps.apple.com/?daddr=Willemsplein%2010%20Arnhem)

### GPS COORDINATES:

LATITUDE: 51.983666 | LONGITUDE: 5.904498

### MAP:



### IMPORTANT! DON'T ENTER THE TUNNEL!

KEEP RIGHT AT 'WILLEMSPLEIN', DIRECTION CENTRAL STATION.

TAKE THE FIRST TURN ON YOUR RIGHT TOWARDS 'OUDE STATIONSTRAAT', BEFORE THE TRAFFIC LIGHTS & TUNNEL.

PROCEED TOWARDS THE ROADBLOCK AND RING OUR DOORBELL.

## RULES & REGULATIONS

### SOUND LIMITATIONS

IN ACCORDANCE WITH THE NATIONAL VNPF/VVEM COVENANT:

MAX: 103 DB(A) LEQ 15 MINUTES

PLEASE NOTE THAT 103 DB(A) IS THE LIMIT AND NOT THE GOAL.  
OUR GENERAL AIM IS TO STAY BELOW 100 DB(A) LEQ 15 MINUTES WHEN POSSIBLE.

LOWER LIMITS ARE IN PLACE FOR EVENTS LARGELY ATTENDED BY CHILDREN:

AGE - YEARS OLD:	≤13	14 – 15	16 – 17	≥18
LIMIT - DB(A) LEQ 15 MIN:	91 dB	96 dB	100 dB	103 dB

WEARING HEARING PROTECTION IS STILL ADVISABLE AT THESE SOUND PRESSURE LEVELS.  
HEARING PROTECTION IS AVAILABLE FOR PURCHASE BY THE AUDIENCE AT ALL OUR EVENTS.

FOR MORE INFORMATION SEE: [ILOVEMYEARS.NL/EN](https://lovemyyears.nl/en)  
OR READ THE FULL COVENANT HERE: [ZOEK.OFFICIELEBEKENDMAKINGEN.NL/STCRT-2024-3787.HTML](https://zoek.officielebekendmakingen.nl/stcrt-2024-3787.html)



### SAFETY

LUXOR LIVE ATTEMPTS TO CREATE A WORKING ENVIRONMENT THAT IS AS SAFE AS POSSIBLE. WE KINDLY ASK VISITING TECHNICIANS TO CONSIDER THE SAFETY OF THEMSELVES, OUR EMPLOYEES, THE ARTISTS AND THE AUDIENCE WHEN WORKING IN OUR VENUE. LUXOR LIVE RESERVES THE RIGHT TO CANCEL OR REFUSE CERTAIN PARTS OF THE SHOW THAT, IN OUR OPINION, HAVE SAFETY ISSUES. IN LIGHT OF THIS ALSO THINK ABOUT WEARING SAFETY-SHOES ON LOAD-IN OR OUTS.

IF YOU HAVE ANY DOUBTS ABOUT THIS IN REGARDS TO YOUR SHOW PLEASE CONTACT US IN ADVANCE SO WE CAN DISCUSS THE MATTER.



LUXOR LIVE HAS AN INHOUSE AED AND  
EMERGENCY RESPONSE OFFICERS (BHV-ERS) TRAINED TO USE IT.

### DECORATION FLAMMABILITY

REGARDING THE FLAMMABILITY OF DECORATIONS WE FOLLOW THE RULES AS DESCRIBED IN THE NBR2011:01 “BRANDVEILIGHEID VAN DECORS, DOEKEN EN DECORATIEMATERIAAL”.

THIS (DUTCH) DOCUMENT CAN BE FOUND HERE: [HTTPS://WWW.LUXORLIVE.NL/WP-CONTENT/UPLOADS/2024/10/NBR-201101-BRANDVEILIGHEID-VAN-DECORS-DOEKEN-EN-DECORATIEMATERIAAL-VVEM-VPT.PDF](https://www.luxorlive.nl/wp-content/uploads/2024/10/NBR-201101-BRANDVEILIGHEID-VAN-DECORS-DOEKEN-EN-DECORATIEMATERIAAL-VVEM-VPT.PDF) AND IS ALSO AVAILABLE THROUGH US ON REQUEST. IF AN ENGLISH EXPLANATION IS REQUIRED, PLEASE CONTACT US FOR THIS DOCUMENTS HIGHLIGHTS. THIS OR ANY OTHER DOCUMENT IN NO WAY ALTERS THE RIGHT DESCRIBED IN THE PREVIOUS SECTION TO CANCEL OR REFUSE CERTAIN PARTS OF THE SHOW IF THEY HAVE SAFETY ISSUES OF ANY KIND. LUXOR LIVE ALWAYS HAS THE FINAL SAY IN SAFETY DISPUTES.

### ENVIRONMENTAL PROTECTION ZONE

PLEASE NOTE, OUR VENUE LIES WITHIN THE ENVIRONMENTAL PROTECTION ZONE OF THE ARNHEM CITY CENTER. THIS MEANS THAT IT IS ONLY PERMITTED TO TRAVEL INTO THE CITY WITH DIESEL VEHICLES OF A CERTAIN EURONORM AND HIGHER. FOR CARS & VANS THIS IS EURONORM 4 (IV) OR HIGHER AND FOR TRUCKS & COACHES THIS IS EURONORM 6 (VI) OR HIGHER. THIS IS ENFORCED BY THE MUNICIPALITY WITH DIGITAL CAMERAS ON ENTRY ROADS AND WILL RESULT IN A €120 - €300 FINE. IT IS POSSIBLE TO REQUEST EXEMPTION BEFOREHAND. IF YOU TRAVEL WITH VEHICLES THAT REQUIRE THIS EXEMPTION CONTACT US WELL IN ADVANCE SO WE CAN HELP WITH THE REQUEST FOR EXEMPTION WITH THE ARNHEM MUNICIPALITY.

### ADDITIONAL INFORMATION:

ARNHEM MUNICIPALITY INFORMATION ON ENVIRONMENTAL ZONE (IN DUTCH):

[HTTPS://WWW.ARNHEM.NL/STAD\\_EN\\_WIJKEN/WEGEN\\_EN\\_VERVOER/MILIEUZONE](https://www.arnhem.nl/stad_en_wijken/wegen_en_vervoer/milieuzone)

NATIONWIDE INFORMATION ON ENVIRONMENTAL ZONES (IN ENGLISH):

[HTTPS://WWW.MILIEUZONES.NL/ENGLISH](https://www.milieuzones.nl/english)

NATIONWIDE INFORMATION ON ENVIRONMENTAL ZONES & NL LICENSE PLATE CHECKER (IN DUTCH):

[HTTPS://WWW.MILIEUZONES.NL/](https://www.milieuzones.nl/)