



LUXOR LIVE



LUXOR LIVE - BASEMENT

VENUE & TECHNICAL INFORMATION

INDEX

GENERAL	2	PA & Monitoring	5
Venue	2	PA.....	5
Info.....	2	Monitoring	5
Contact.....	2	Microphones, DI's & Stands.....	5
Bookings.....	2	House RF Frequencies.....	5
Production.....	2	Microphones.....	5
Technical	2	Stands.....	5
Parking.....	3	LIGHTS	6
Hospitality	3	Console.....	6
Dressing rooms.....	3	Console.....	6
Miscellaneous.....	3	Programs.....	6
DJ Gear	3	Fixtures	6
Infra & Connections.....	3	Hall.....	6
Special FX	3	Patch	6
Stage	4	APPENDICES	7
DJ Booth.....	4	Directions.....	7
Hall Dimensions.....	4	Rules & Regulations	8
AUDIO	5	Sound limitations.....	8
Consoles, Interfaces & Outboard	5	Safety.....	8
Consoles.....	5	Decoration flammability.....	8
Outboard	5	Environmental protection & Zero emission zone.....	9

FOR MORE INFORMATION & OTHER HALLS SEE: WWW.LUXORLIVE.NL/TECH-SPECS

GENERAL

VENUE

INFO

NAME

LUXOR LIVE –
BASEMENT

CAPACITY

50 – STANDING

VISITOR ADDRESS

WILLEMSPLEIN 10
6811 KB ARNHEM
THE NETHERLANDS

LOAD IN ADDRESS

WILLEMSPLEIN 10
6811 KB ARNHEM
THE NETHERLANDS

CONTACT

POSTAL ADDRESS

LUXOR LIVE
P.O. Box 925
6800 AX ARNHEM

PHONE

+31-(0)26-3511660

EMAIL

INFO@LUXORLIVE.NL

WEBSITE

WWW.LUXORLIVE.NL

BOOKINGS

DANCE

NIELS LEFERINK
NIELS@LUXORLIVE.NL

JELLE SCHONEVELD
JELLE@LUXORLIVE.NL

PRODUCTION

JESSICA VAN VORSTENBOS
JESSICA@LUXORLIVE.NL

IZANKA LABOTS
IZANKA@LUXORLIVE.NL

TECHNICAL

SOUND

MATTIJS DE VROOMEN
MATTIJS@LUXORLIVE.NL

LIGHT

KOEN WOLTERINK
KOEN@LUXORLIVE.NL

FON SANDERS
FON@LUXORLIVE.NL

PARKING

ALL PARKING FACILITIES ARE SHARED WITH THE MAIN AND SMALL HALL.

AVAILABLE SPACE

≈ SIX CARS (≈16 × 5 METERS)

PARKING POWER

- 1 × 400V/32A 3 PHASE (CEE FORM)
- 1 × 230V/16A 1 PHASE (SCHUKO OR CEE FORM)

LOCATION

ARTIST-PARKING IS NEXT TO THE LUXOR LIVE OFFICE AND BACKSTAGE ENTRANCE AT THE BACK OF THE BUILDING.

SECURITY

THE ARTIST PARKING IS ENCLOSED BEHIND A GARAGE DOOR FOR WHICH THE ACCESS CODE CAN BE PROVIDED ON THE DAY OF THE SHOW.

HOSPITALITY

DRESSING ROOMS

DRESSING ROOMS ARE SHARED WITH THE MAIN HALL AND MIGHT NOT BE AVAILABLE FOR THE BASEMENT. IF A DRESSING ROOM IS PROVIDED YOU'RE WELCOME TO USE THE DRESSING ROOMS FOR ONE HOUR AFTER THE SHOW UNLESS AGREED UPON OTHERWISE.

LARGE DRESSING ROOM

- 1 × SHOWER
- ✓ TOWELS
- 1 × TOILET
- 1 × SINK

- 1 × REFRIGERATOR
- 2 × MIRROR
- ✓ FURNITURE
- ✓ LOCKABLE

SMALL DRESSING ROOM

- 1 × SINK
- 1 × REFRIGERATOR
- 1 × MIRROR

- ✓ FURNITURE
- ✓ LOCKABLE

GENERAL (SHARED)

- 1 × SHOWER
- ✓ TOWELS
- 2 × TOILET
- 1 × WASHING MACHINE

- 1 × WASHING DRYER
- 1 × IRONING IRON & BOARD
- ✓ WIFI

MISCELLANEOUS

DJ GEAR

PROVIDED ON REQUEST

MIXERS

- 1 × PIONEER DJM-900NXS

MEDIA PLAYERS

- 4 × PIONEER CDJ-2000NXS

TURNTABLES

- 2 × TECHNICS SL 1210 MK2
ORTOFON CONCORDE MKII Mix
CARTRIDGE & STYLUS

TURNTABLES ARE SHARED WITH OTHER HALLS AND MIGHT NOT BE AVAILABLE

INFRA & CONNECTIONS

DATA

- 1 × CAT5E – RJ45
↳ INTERNET CONNECTION
- 1 × CAT5E – LIGHTING CONTROL
↳ TO CONTROL PANEL AT BAR

POWER

- ✓ × 230V KERAFF PLUGBOARDS
↳ ALL BLACK
- 1 × 400V/32A 3 PHASE – CEE FORM
↳ USED FOR FOH, PA AND DJ-SET

SPECIAL FX

DUE TO THE SMALL SIZE AND CLEARANCE OF THIS HALL, SPECIAL FX ARE NOT POSSIBLE. THIS INCLUDES (BUT IS NOT LIMITED TO):

FLAME OR SPARK-JETS, (LOW-, VERTICAL-) FOG OR HAZE, CO², LASERS, BUBBLE MACHINES, CONFETTI-OR STREAMER-SHOTS AND STROBOSCOPES.

STAGE

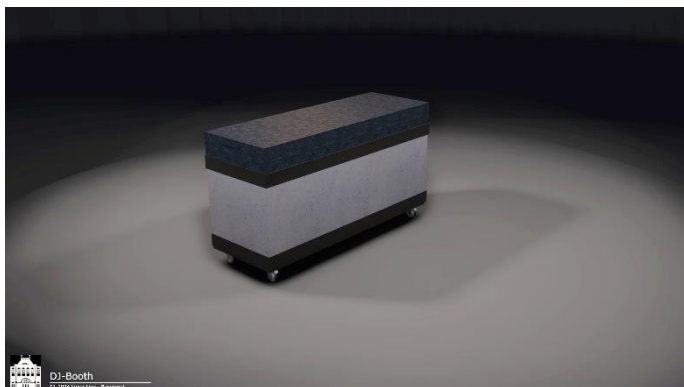
DJ BOOTH

CUSTOM DESIGN WHITE GoGo-PLASTIC – ROLLING DJ-BOOTH WITH OPTIONAL ALUMINUM HOOD

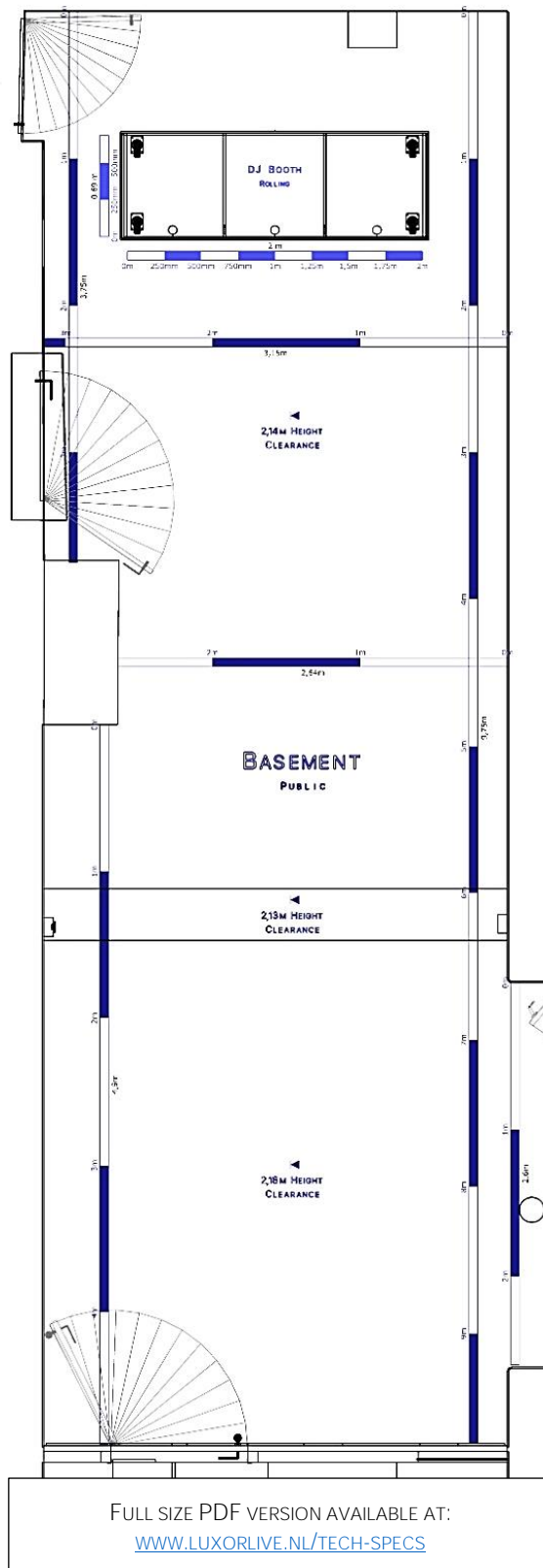
THE DJ-BOOTH CAN MOVE AROUND THE ROOM BUT WILL NOT BE REMOVED FROM THE AREA. WHEN NOT IN USE IT CAN BE COVERED WITH THE HOOD, ON WHICH LIGHTWEIGHT ITEMS MAY BE PLACED.

MEASUREMENTS

WIDTH: 2 M
 DEPTH: 0,69 M
 HEIGHT: 0,9 M
 HEIGHT: 1,15 M (WITH HOOD)



HALL DIMENSIONS



AUDIO

CONSOLES, INTERFACES & OUTBOARD

CONSOLES

ANALOG

1 × MIDAS VENICE 240
24 IN/12 OUT

OUTBOARD

FX RACK

1 × KLARK TEKNIK 160A 2CH GEO

PA & MONITORING

PA

2 × ELECTRO-VOICE Sx A250 ACTIVE TOP
1 × ELECTRO-VOICE PLASMA P2 ACTIVE SUB

MONITORING

1 × ELECTRO-VOICE PLASMA P1 ACTIVE WEDGE

HOUSE RF FREQUENCIES

FREQUENCIES IN USE BY OUR EQUIPMENT:

MAIN HALL ULXD 1: 624,875 MHz
MAIN HALL ULXD 2: 616,150 MHz
MAIN HALL ULXD 3: 619,575 MHz
MAIN HALL ULXD 4: 610,700 MHz

SMALL HALL ULXD 1: 606,700 MHz
SMALL HALL ULXD 2: 612,600 MHz

MICROPHONES, DI'S & STANDS

MICROPHONES

WIRED:

1 × SHURE SM 58

STANDS

☞ ALL BLACK

2 × K&M SPEAKER STAND
✓ × K&M MICROPHONE STANDS
☞ ON REQUEST ONLY

SOUND LIMITATIONS

103 dB(A) - LEQ 15 MIN



FOR MORE INFORMATION SEE: 'RULES & REGULATIONS – SOUND LIMITATIONS' ON PAGE 9

LIGHTS

ALL LIGHTING HAS FIXED POSITIONS & PROGRAMMING. OPERATION IS DONE BY BAR PERSONNEL THROUGH A FIXED SET OF LOOKS AND FX. IT'S POSSIBLE TO BRING YOUR OWN LIGHTING CONSOLE BUT THERE IS NO FOH POSITION WITH OVERVIEW.



CONSOLE

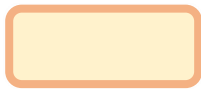
CONSOLE

- 1 × VISUAL PRODUCTIONS CUECORE2
 - 1 × VISUAL PRODUCTIONS B-STATION2
- 🔗 CONTROLLED BY BAR PERSONNEL

PROGRAMS

PRE-PROGRAMMED BUTTONS:

1: NEUTRAL
WORKLIGHT



OVERRULES ALL
OTHER CUES

2: BRIGHTNESS
CONTROL



MASTER BRIGHTNESS
CONTROL

5: WHITE STROBE
EFFECT



FAST SPARKLE,
OVERRULES ALL
OTHER CUES

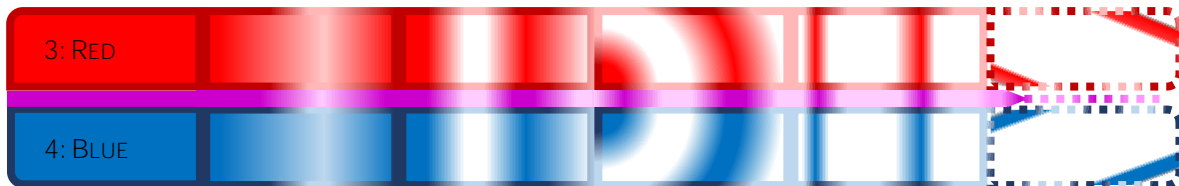
6: WHITE PULSE
EFFECT



FAST PULSE EFFECT,
OVERLAYS ON OTHER
ACTIVE CUES

3 - 4: COLORED LOOKS

A: SOLID COLOR B: LIGHT WAVE C: MEDIUM WAVE D: MEDIUM PULSE E: ACTIVE PULSE F: FAST BARS



A RED AND BLUE COLOR STACK, EACH WITH 6 CUES THAT INCREASE IN INTENSITY. STACKS CAN BE OVERLAYED ON EACH OTHER TO CREATE MAGENTA (EFFECTS). OTHER COLORS ARE NOT AVAILABLE.

FIXTURES

HALL

LED

- 4 × SHOWTEC OCTOSTRIP MKII SET
(7 strips per set - 28 in total)
- 192CH MODE

PATCH

PROTOCOLS

ART-NET RJ45/WiFi
DMX 5P XLR

UNIVERSES:

- 1 SET A & B
- 2 SET C & D

FULL PLOTS AND PATCH REPORTS AVAILABLE AT: WWW.LUXORLIVE.NL/TECH-SPECS/LIGHTS

APPENDICES

DIRECTIONS

NAVIGATION ADDRESS:

WILLEMSPLEIN 10, 6811KB, ARNHEM, NETHERLANDS.

MAP LINKS:

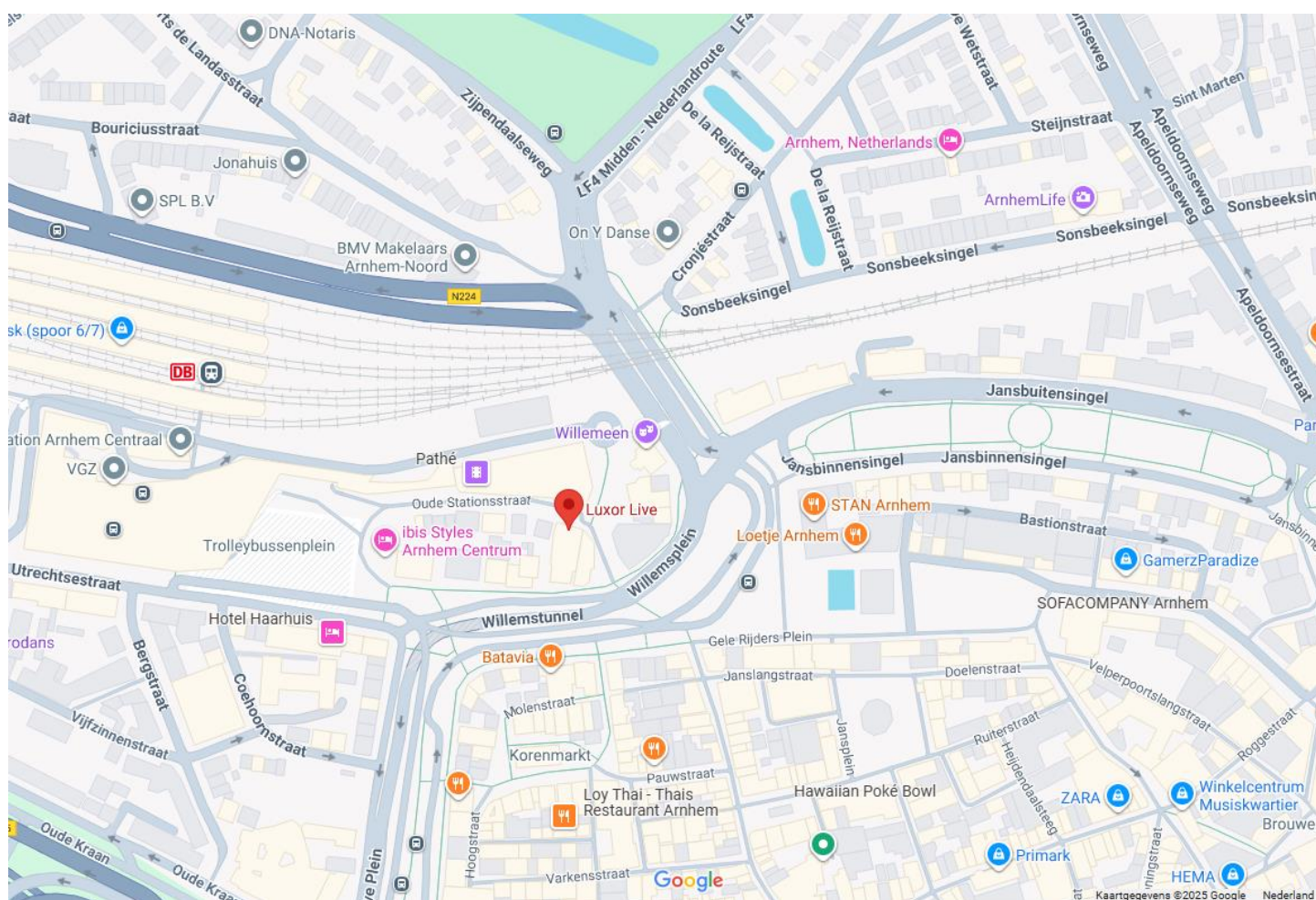
GOOGLE MAPS: [HTTPS://MAPS.APP.GOO.GL/ATPk3FTFAERDPKG76](https://maps.app.goo.gl/ATPk3FTFAERDPKG76)

APPLE MAPS: [HTTP://MAPS.APPLE.COM/?DADDR=WILLEMSPLEIN%2010%20ARNHEM](http://maps.apple.com/?daddr=WILLEMSPLEIN%2010%20ARNHEM)

GPS COORDINATES:

LATITUDE: 51.983666 | LONGITUDE: 5.904498

MAP:



IMPORTANT! DON'T ENTER THE TUNNEL!

KEEP RIGHT AT 'WILLEMSPLEIN', DIRECTION CENTRAL STATION.

TAKE THE FIRST TURN ON YOUR RIGHT TOWARDS 'OUDE STATIONSTRAAT', BEFORE THE TRAFFIC LIGHTS & TUNNEL.

PROCEED TOWARDS THE ROADBLOCK AND RING OUR DOORBELL.

RULES & REGULATIONS

SOUND LIMITATIONS

IN ACCORDANCE WITH THE NATIONAL VNPF/VVEM COVENANT:

MAX: 103 DB(A) LEQ 15 MINUTES

PLEASE NOTE THAT 103 DB(A) IS THE LIMIT AND NOT THE GOAL.
OUR GENERAL AIM IS TO STAY BELOW 100 DB(A) LEQ 15 MINUTES WHEN POSSIBLE.



LOWER LIMITS ARE IN PLACE FOR EVENTS LARGELY ATTENDED BY CHILDREN:

AGE - YEARS OLD:	≤13	14 – 15	16 – 17	≥18
LIMIT - DB(A) LEQ 15 MIN:	91 dB	96 dB	100 dB	103 dB

WEARING HEARING PROTECTION IS STILL ADVISABLE AT THESE SOUND PRESSURE LEVELS.
HEARING PROTECTION IS AVAILABLE FOR PURCHASE BY THE AUDIENCE AT ALL OUR EVENTS.

FOR MORE INFORMATION SEE: ILOVEMYEARS.NL/EN
OR READ THE FULL COVENANT HERE: ZOEK.OFFICIELEBEKENDMAKINGEN.NL/STCRT-2024-3787.HTML

SAFETY

LUXOR LIVE ATTEMPTS TO CREATE A WORKING ENVIRONMENT THAT IS AS SAFE AS POSSIBLE. WE KINDLY ASK VISITING TECHNICIANS TO CONSIDER THE SAFETY OF THEMSELVES, OUR EMPLOYEES, THE ARTISTS AND THE AUDIENCE WHEN WORKING IN OUR VENUE. LUXOR LIVE RESERVES THE RIGHT TO CANCEL OR REFUSE CERTAIN PARTS OF THE SHOW THAT, IN OUR OPINION, HAVE SAFETY ISSUES. IN LIGHT OF THIS ALSO THINK ABOUT WEARING SAFETY-SHOES ON LOAD-IN OR OUTS.

IF YOU HAVE ANY DOUBTS ABOUT THIS IN REGARDS TO YOUR SHOW PLEASE CONTACT US IN ADVANCE SO WE CAN DISCUSS THE MATTER.



LUXOR LIVE HAS AN INHOUSE AED AND EMERGENCY RESPONSE OFFICERS (BHV-ERS) TRAINED TO USE IT.

DECORATION FLAMMABILITY

REGARDING THE FLAMMABILITY OF DECORATIONS WE FOLLOW THE RULES AS DESCRIBED IN THE NBR2011:01 “BRANDVEILIGHEID VAN DECORS, DOEKEN EN DECORATIEMATERIAAL”. THIS (DUTCH) DOCUMENT CAN BE FOUND HERE: [HTTPS://WWW.LUXORLIVE.NL/WP-CONTENT/UPLOADS/2024/10/NBR-201101-BRANDVEILIGHEID-VAN-DECORS-DOEKEN-EN-DECORATIEMATERIAAL-VVEM-VPT.PDF](https://www.luxorlive.nl/wp-content/uploads/2024/10/NBR-201101-BRANDVEILIGHEID-VAN-DECORS-DOEKEN-EN-DECORATIEMATERIAAL-VVEM-VPT.PDF) AND IS ALSO AVAILABLE THROUGH US ON REQUEST. IF AN ENGLISH EXPLANATION IS REQUIRED, PLEASE CONTACT US FOR THIS DOCUMENTS HIGHLIGHTS. THIS OR ANY OTHER DOCUMENT IN NO WAY ALTERS THE RIGHT DESCRIBED IN THE PREVIOUS SECTION TO CANCEL OR REFUSE CERTAIN PARTS OF THE SHOW IF THEY HAVE SAFETY ISSUES OF ANY KIND. LUXOR LIVE ALWAYS HAS THE FINAL SAY IN SAFETY DISPUTES.

ENVIRONMENTAL PROTECTION & ZERO EMISSION ZONE

PLEASE NOTE, OUR VENUE LIES WITHIN THE ENVIRONMENTAL PROTECTION & ZERO EMISSION ZONE OF THE ARNHEM CITY CENTER.

THIS MEANS THAT FROM 01-06-2026 ONWARD ACCESS TO THE CITY CENTER IS LIMITED FOR CERTAIN VEHICLES. THIS IS ENFORCED WITH DIGITAL CAMERAS ON ENTRY ROADS AND NON-COMPLIANCE WILL RESULT IN A €130 - €320 FINE.

IT IS POSSIBLE TO PURCHASE EXEMPTIONS BEFOREHAND.

IF YOU ARE UNSURE WHETHER YOUR VEHICLE IS ALLOWED OR IN WHICH CATEGORY IT FALLS, PLEASE USE BOTH THE LICENSE PLATE CHECKERS BELOW (FOR DUTCH LICENSE PLATES ONLY).

IF YOU TRAVEL WITH VEHICLES THAT (MIGHT) REQUIRE THIS EXEMPTION AND NEED HELP PLEASE CONTACT US WELL IN ADVANCE.

ARNHEM MUNICIPALITY INFORMATION ON ENVIRONMENTAL PROTECTION & ZERO EMISSION ZONE (IN DUTCH):

[ARNHEM.NL/ALLE-ONDERWERPEN/VERKEER/MILIEUZONE-EN-ZERO-EMISSIEZONE](https://arnhem.nl/alle-onderwerpen/verkeer/milieuzone-en-zero-emissiezone)

ZERO EMISSION ZONE (CARGO VEHICLES, VEHICLE CATEGORIES N1, N2 & N3):

FOR CARGO VEHICLES LIKE VANS (N1) & TRUCKS (N2/N3) ACCESS IS LIMITED TO ZERO-EMISSION VEHICLES. EXEMPTIONS CAN BE PURCHASED THROUGH THE RDW

PURCHASE EXEMPTION TO THE ZERO EMISSION ZONE (CARGO VEHICLES) AT THE RDW (IN DUTCH):

[RDW.NL/ONTHEFFING-ZERO-EMISSIE/AANVRAGEN](https://rdw.nl/ontheffing-zero-emissie/aanvragen)

NATIONWIDE INFORMATION ON ZERO EMISSION ZONES & NL LICENSE PLATE CHECKER (IN DUTCH):

[OPWEGNAARZES.NL](https://opwegnaarzes.nl)

ENVIRONMENTAL ZONE (DIESEL PASSENGER VEHICLES, VEHICLE CATEGORIES M1, M2 & M3):

FOR DIESEL PASSENGER VEHICLES ACCESS IS LIMITED TO VEHICLES OF A CERTAIN EURNORM OR HIGHER.

FOR CARS & PASSENGER VANS (M1) THIS IS EURNORM 5 (V) OR HIGHER AND FOR AUTOBUSES & COACHES (M2/M3) THIS IS EURNORM 6 (VI) OR HIGHER.

EXEMPTIONS CAN BE PURCHASED THROUGH THE ARNHEM MUNICIPALITY.

PURCHASE EXEMPTION TO THE ENVIRONMENTAL PROTECTION ZONE (PASSENGER VEHICLES) AT THE ARNHEM MUNICIPALITY (IN DUTCH):

[ARNHEM.NL/PRODUCT/ONTHEFFING-MILIEUZONE-PERSONENAUTOS-EN-AUTOBUSSEN](https://arnhem.nl/product/ontheffing-milieuzone-personenautos-en-autobussen)

NATIONWIDE INFORMATION ON ENVIRONMENTAL ZONES & NL LICENSE PLATE CHECKER (IN DUTCH):

[MILIEUZONES.NL](https://milieuzones.nl)